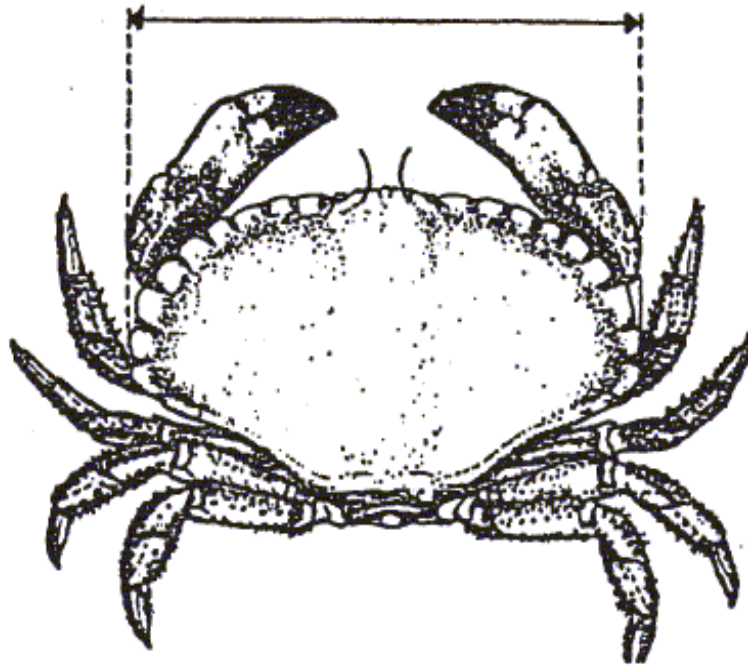
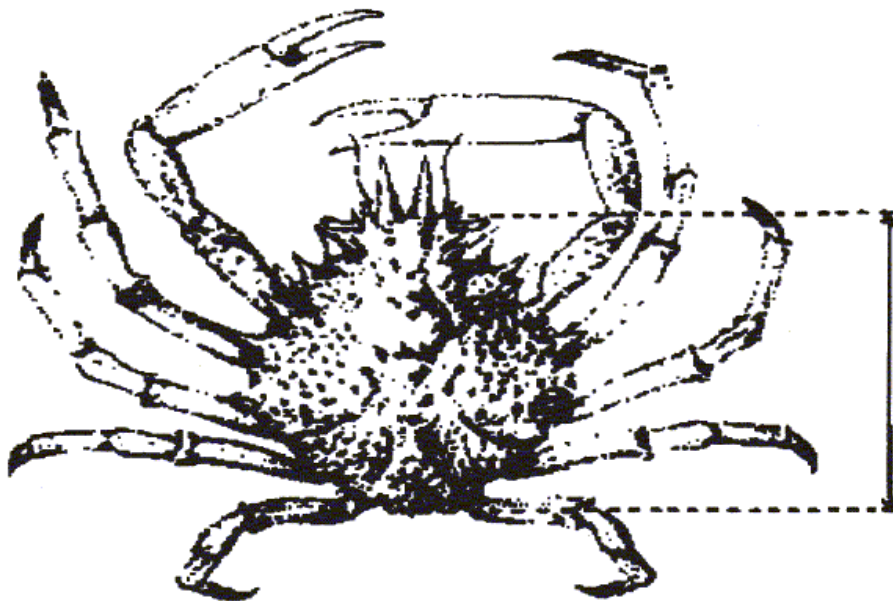


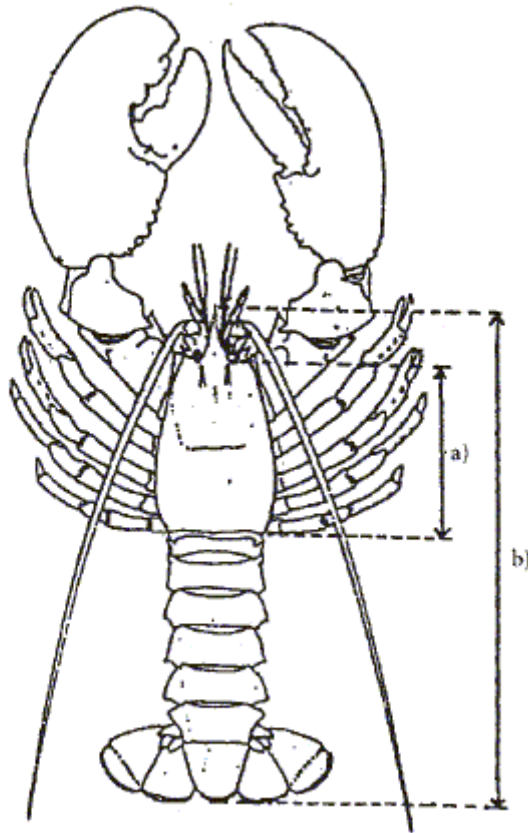
Edible Crabs and Velvet Crabs shall be measured across the broadest part of the shell, perpendicular to the midline.



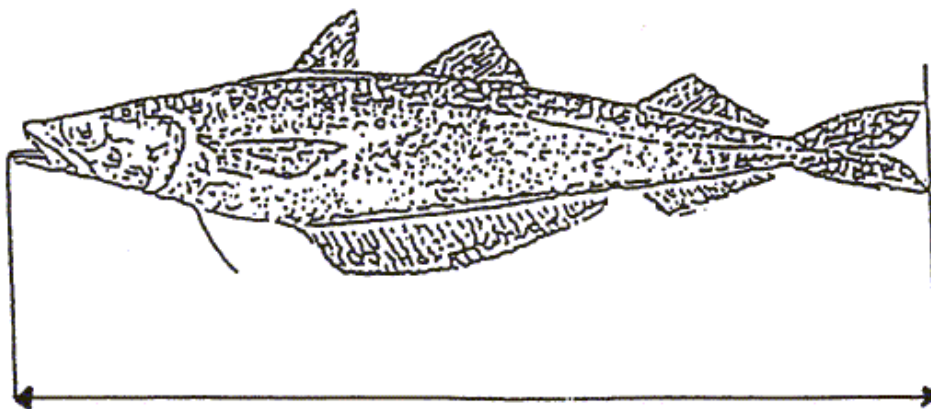
Spider Crabs shall be measured along the midline of the shell from the edge of the carapace between the rostrums to the posterior edge of the carapace.



Lobsters shall be measured parallel to the midline from the back of either eye socket to the distal edge of the carapace (a)



Any fish shall be measured from the tip of the snout to the end of the tail fin



Crawfish shall be measured from the tip of the central rostral spine, along the midline to the midpoint of the distal edge of the carapace

