



Recreational Fishing and Sea Angling

*What you need to know
2016*

This guide gives a brief introduction to the NEIFCA and some of the regulations which may affect you when leisure fishing.

The Authority regulates and manages the exploitation of sea fisheries resources within its district, which extends from the south bank of the River Tyne to Cleethorpes in north east Lincolnshire and out to six nautical miles at sea. NEIFCA is responsible for issuing permits for fishing and creating byelaws for the management and conservation of fisheries, both commercial and recreational. These byelaws can apply to all fishing activities, from both the shore and from vessels.



Minimum landing sizes:

The majority of fish and shellfish that are taken by recreational fishers have a minimum landing size. These sizes are set to allow an animal to breed at least once before being removed from the sea.

Recently there has been an increase in the minimum landing size of bass to 42cm. In addition a 1 fish bag limit is in effect since 1st July 2016. This means that anglers can take only 1 bass per day per angler. This regulation may be subject to change as of December 2016.

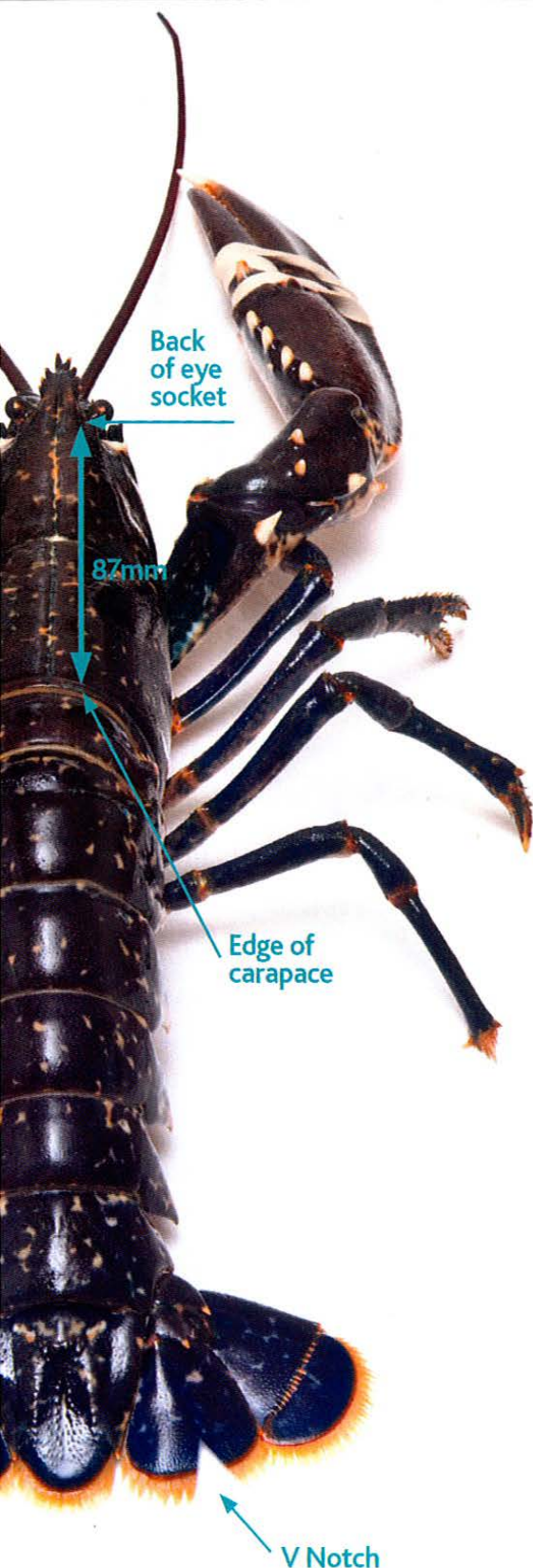
Below is a list of minimum landing sizes of common species. Please be aware that this is not an exhaustive list. You can contact our office if you are unsure of the correct size for the animal you wish to catch.

What regulations can affect you?

- Minimum landing sizes
- Limited shell fish permit
- No take zones and area closures
- Use of nets
- Tope

Lobster	87mm	Bass	42cm
Edible Crab	140mm	Cod	35cm
Velvet Crab	65mm	Mackerel	30cm
Mussel	51mm	Plaice	27cm
Whelk	45mm	Sole	24cm
Razor Clam	100mm	Whiting	27cm





Limited Shellfish Permit

Before you can catch crabs, lobster and whelks from the shore, a boat or whilst diving, you need a limited shellfish permit.

Permits are free to hobby fishers, available from <http://www.ne-ifca.gov.uk/apply-for-a-permit/>.

The permit allows you to take up to 2 lobsters, 30 whelks and 10 crabs.

You can use up to 10 crab pots to capture shellfish, if so each pot must:

- Have a plastic tag attached, provided by NEIFCA displaying permit number and year
- Have an escape gap fitted to each chamber within 50mm of the base. An escape gap is a small plastic opening that measures 80mm x46mm

Netting

If not using pots, 100m of net can be used to capture shellfish. However if a net is to be used it is strongly advised that you contact our office first, as netting is subject to several other regulations.

No take zone and closed areas

- A no take exists at Flamborough Head. This extends from Sewerby Steps to Danes Dyke and 700m seawards from the base of the cliffs. Nothing can be taken from the shore or sea.
- Cockle bed closures are also in force throughout the district, please contact the office for further information

Crab claws, lobster claws and lobster tails

- It is an offence to break off the claws or tail of crab and lobster
- It is an offence to use parts of a crab or lobster as bait
- It is illegal to take a lobster with a damaged tail or if it has a v notch (see picture opposite).

To ensure that you comply with all relevant regulations and for the most up to date information, please visit: www.ne-ifca.gov.uk or phone **01482 393515**

Tope prohibition

No tope or parts can be taken from the district. All tope must be returned to the sea